

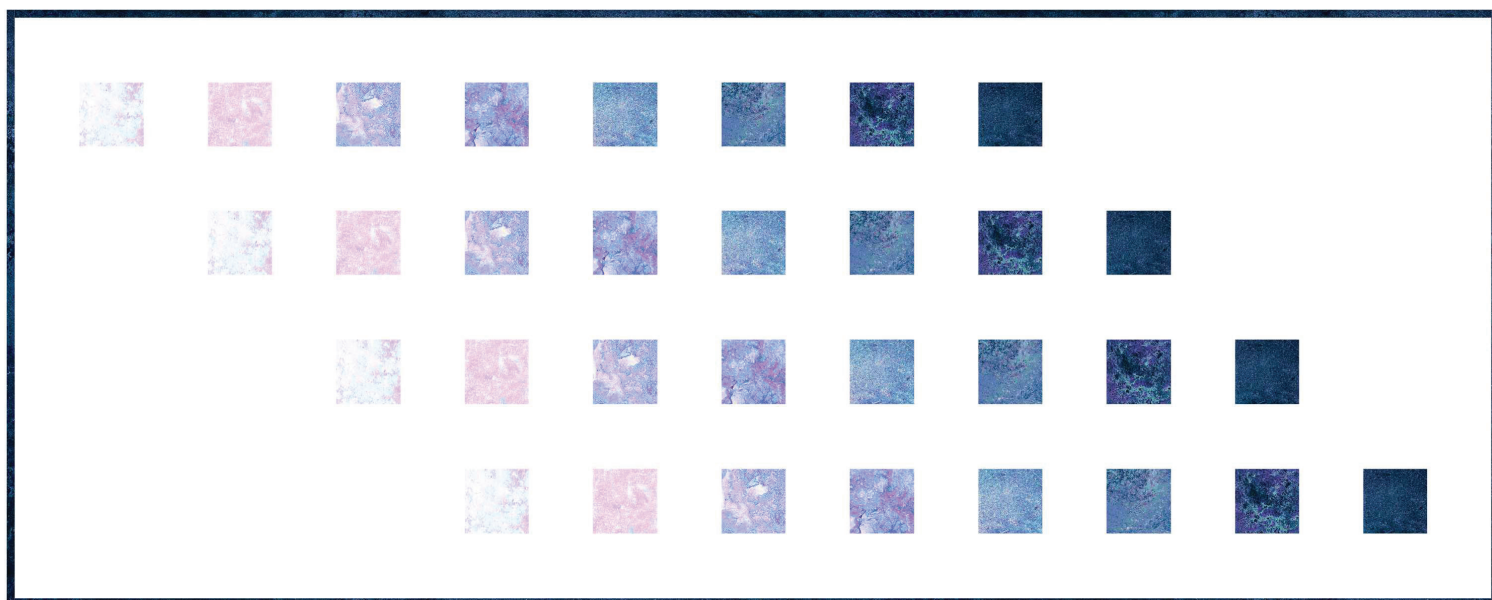


NORTHCOTT  
*Cottons that feel like silk*

STONEHENGE  
by Linda Ludovico

# Gradations

MYSTIC



## MYSTIC TABLE RUNNER

FREE PATTERN • 18" x 46" • By Elaine Theriault of Northcott

**Northcott Canada**  
101 Courtland Avenue  
Vaughan, Ontario L4K 3T5

**Northcott USA**  
1099 Wall St. West, Suite 250  
Lyndhurst, NJ 07071

[www.northcott.com](http://www.northcott.com)

# Mystic Table Runner

Finished Size: 18" by 46"

wof = width of fabric

Fabric requirements	Yards	Cutting Instructions
Fabric A: Squares Mystic Chip Pack <b>Twilight:</b> 39306-66, 39305-66, 39304-66, 39303-66, 39300-66, 39302-67 39301-67, 39300-67 <b>OR</b> <b>Midnight:</b> 39306-46, 39305-46 39304-46, 39303-46 39300-46, 39302-47 39301-47, 39300-47	Eight - 5" squares	<ul style="list-style-type: none"> <li>• Cut each square into four (4) squares measuring 2 ½" square</li> </ul>
Fabric B: Background <b>White Toscana</b> #9020-10	¾ yard	<ul style="list-style-type: none"> <li>• Cut nine (9) strips measuring 2 ½" by wof               <ul style="list-style-type: none"> <li>• Sub cut two (2) pieces measuring 2 ½" by 12 ½"</li> <li>• Sub cut two (2) pieces measuring 2 ½" by 8 ½"</li> <li>• Sub cut two (2) piece measuring 2 ½" by 4 ½"</li> <li>• Sub cut twenty-eight (28) squares measuring 2 ½" square</li> </ul> </li> </ul>
Fabric C: <b>Twilight:</b> 39301-67 <b>OR</b> <b>Midnight:</b> 39301-47 Binding	¾ yard	<ul style="list-style-type: none"> <li>• Cut four (4) strips measuring 2 ½" by wof               <ul style="list-style-type: none"> <li>• Join end to end using a diagonal seam for the binding</li> </ul> </li> </ul>
<b>Backing</b>	1 yard	<ul style="list-style-type: none"> <li>• Pieced crosswise</li> </ul>

Use ¼" Seam Allowance

## Pieced Strips (make 4):

- Lay out the colored squares (Fabric A) in a manner that is pleasing to you. I kept mine in a gradation from light to dark.
- Sew a 2 ½" square of white (Fabric B) between each of the squares. Press towards the colored squares.

## Completing the pieced strips:

- Pieced strip number one: Sew a 2 ½" by 12 ½" on the end with the darkest square.
- Pieced strip number two: Sew a 2 ½" by 4 ½" rectangle on the end with the lightest square and a 2 ½" on the 8 ½" on the end with the darkest square.
- Pieced strip number three: Sew a 2 ½" by 8 ½" on the end with the lightest square and a 2 ½" by 4 ½" on the end with the darkest square.
- Pieced strip number four: Sew a 2 ½" by 12 ½" to the end with the lightest square.

## Sew the top together with the sashing

- Measure these four strips to get the average length (should be 42 ½"). Cut five strips of Fabric A to the same length as the average length of your pieced strips. Match up the centers of a pieced strip and a sashing strip and pin. Pin the end of the sashing to both ends of the pieced strip. You may have to ease the pieced strip or the sashing in place. Repeat until all four pieced strips are bordered by the white sashing.
- Measure through the width of the table runner and cut two pieces of white sashing that equals that same width (should be 18 ½"). Sew to either end of the table runner.

NOTE: It is best to NOT prewash preprinted fabrics such as panels and border prints. The fabric goes through many processes to be delivered to the consumer and there may be some size variations. If you're unable to cut the panels to the size mentioned above, cut the pieces to a size that works for your panels and adjust any other measurements accordingly.